A topographic map of Oregon showing county boundaries. The map uses a color gradient from green in the west to tan in the east, representing elevation. A semi-transparent dark grey box is overlaid on the map, containing the title and authors.

2009 Oregon Vineyard and Winery Report
USDA National Agricultural Statistics Service
Chris Mertz, Bruce Eklund, Kathryn Williams

http://www.nass.usda.gov/Statistics_by_State/Oregon/Publications/Vineyard_and_Winery/

2008-2009 State and Regional Comparisons

2009

19400 acres

40200 tons

835 vineyards

387 wineries

Change from 2008

+100 acres

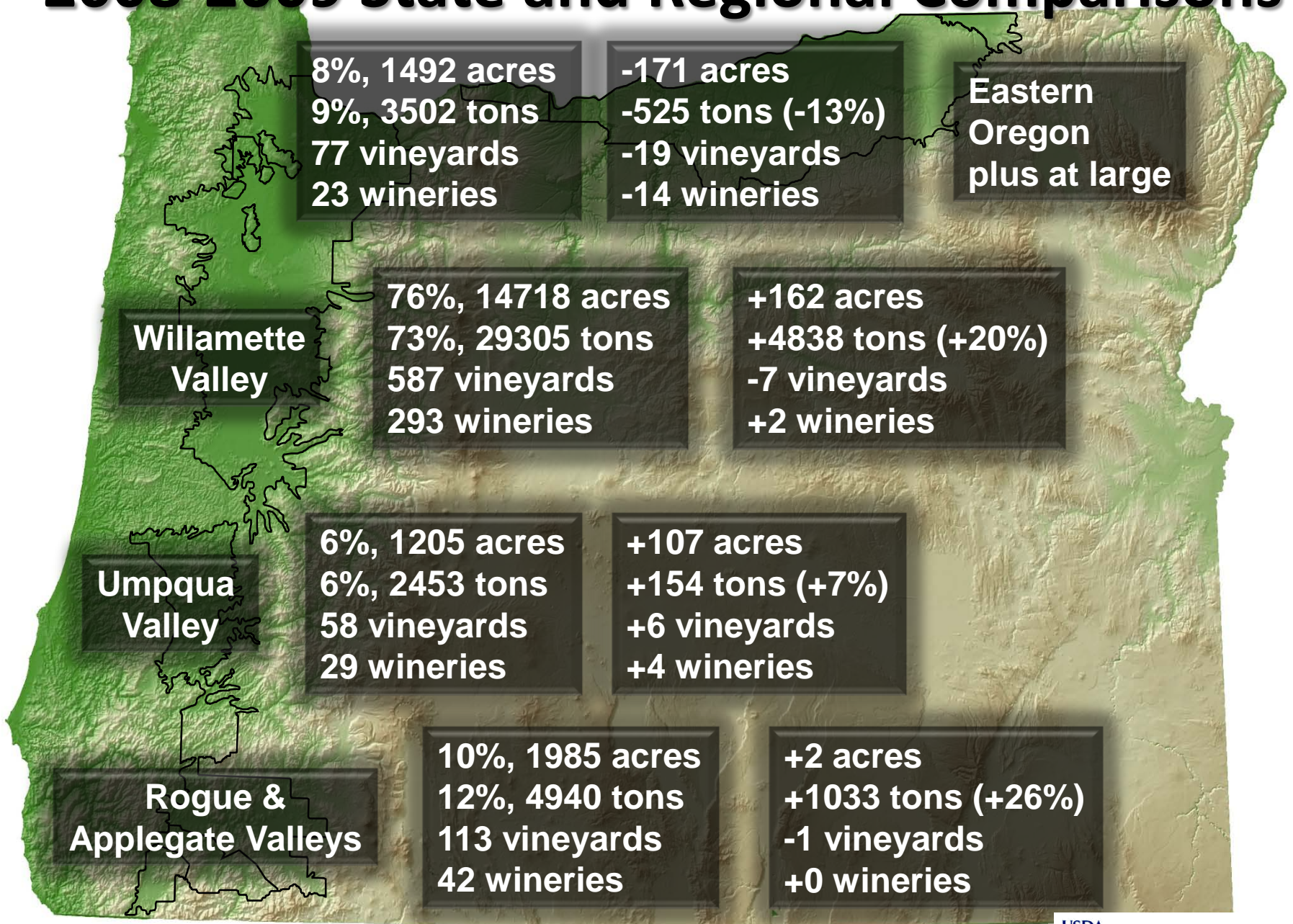
+5500 tons (+15.9%)

-21 vineyards

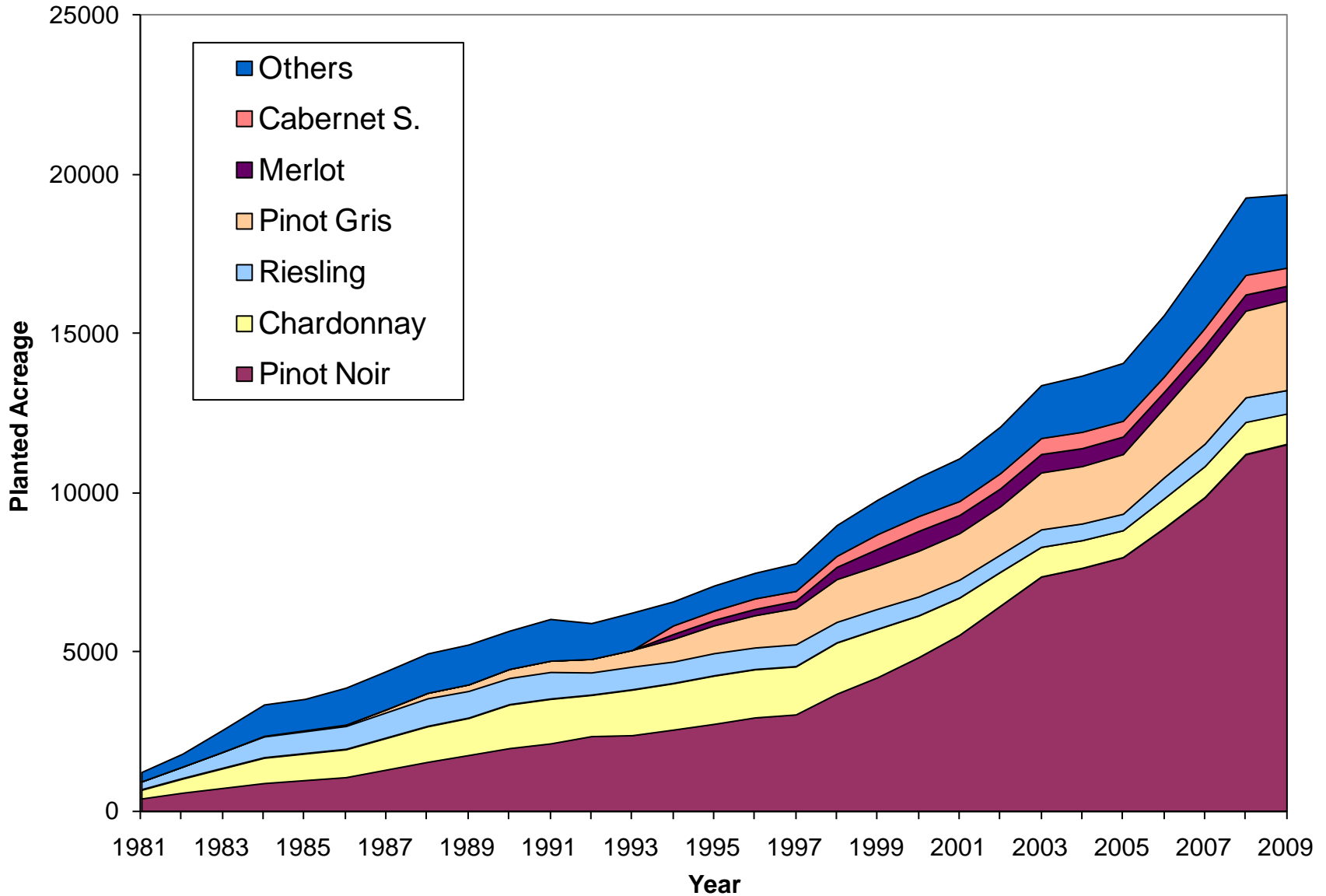
-8 wineries

- Washington 2009 production was 156,000 tons, up 8% over 2008
- California 2009 production was 3.69 million tons, up 23% over 2008

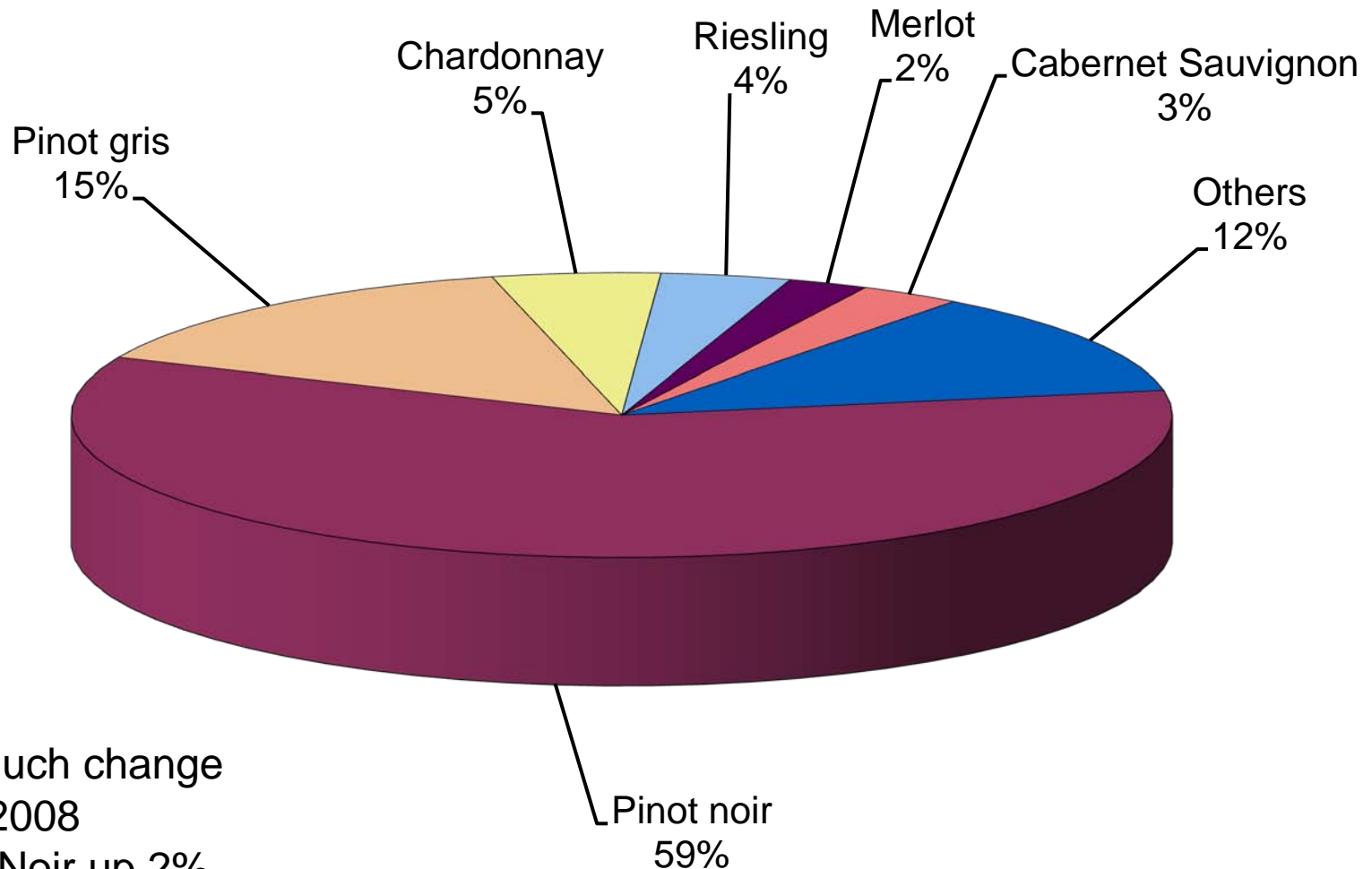
2008-2009 State and Regional Comparisons



Planted Acreage by Main Varieties, 1981-2009

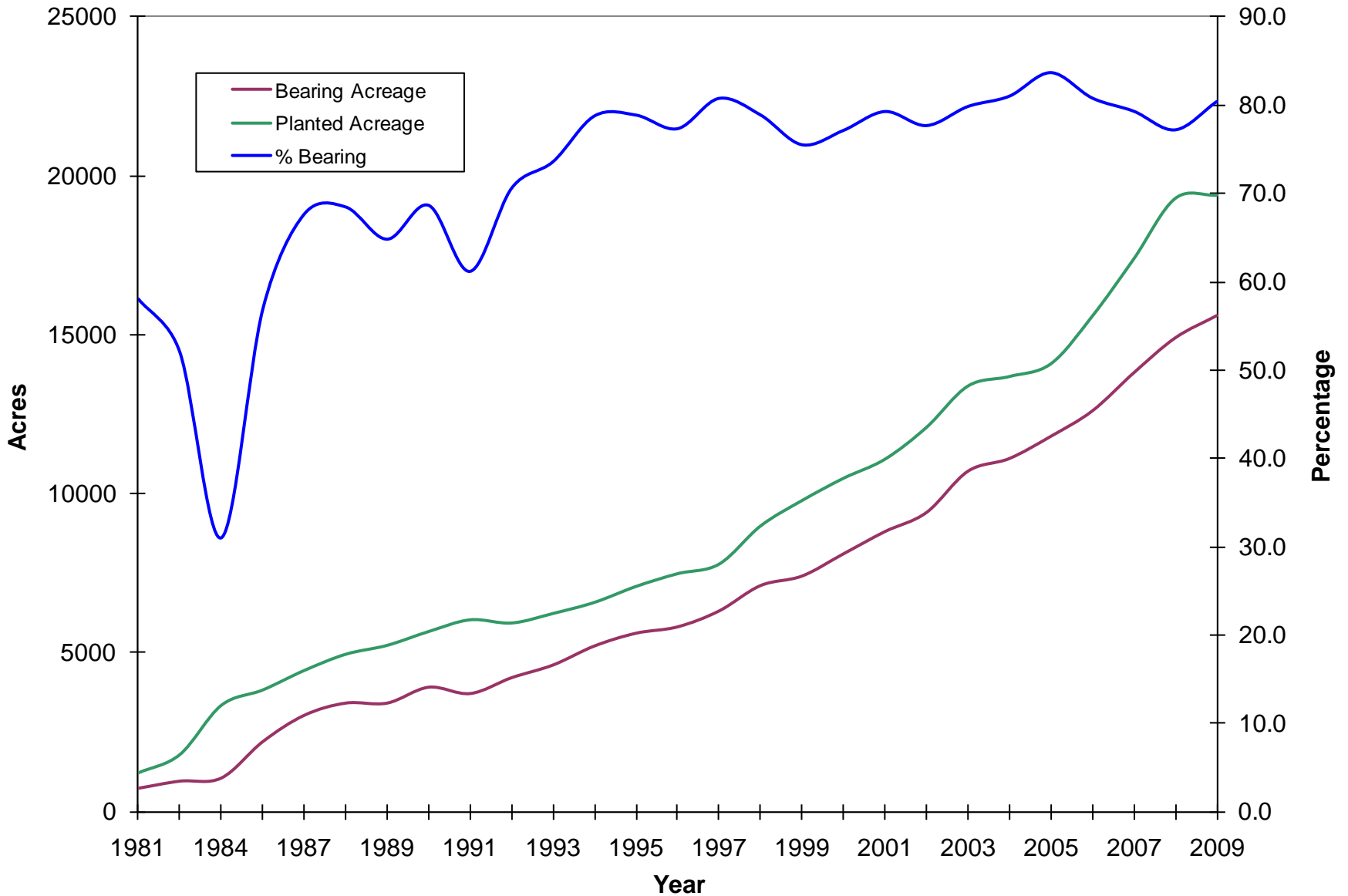


Planted Acreage by Main Varieties, 2009

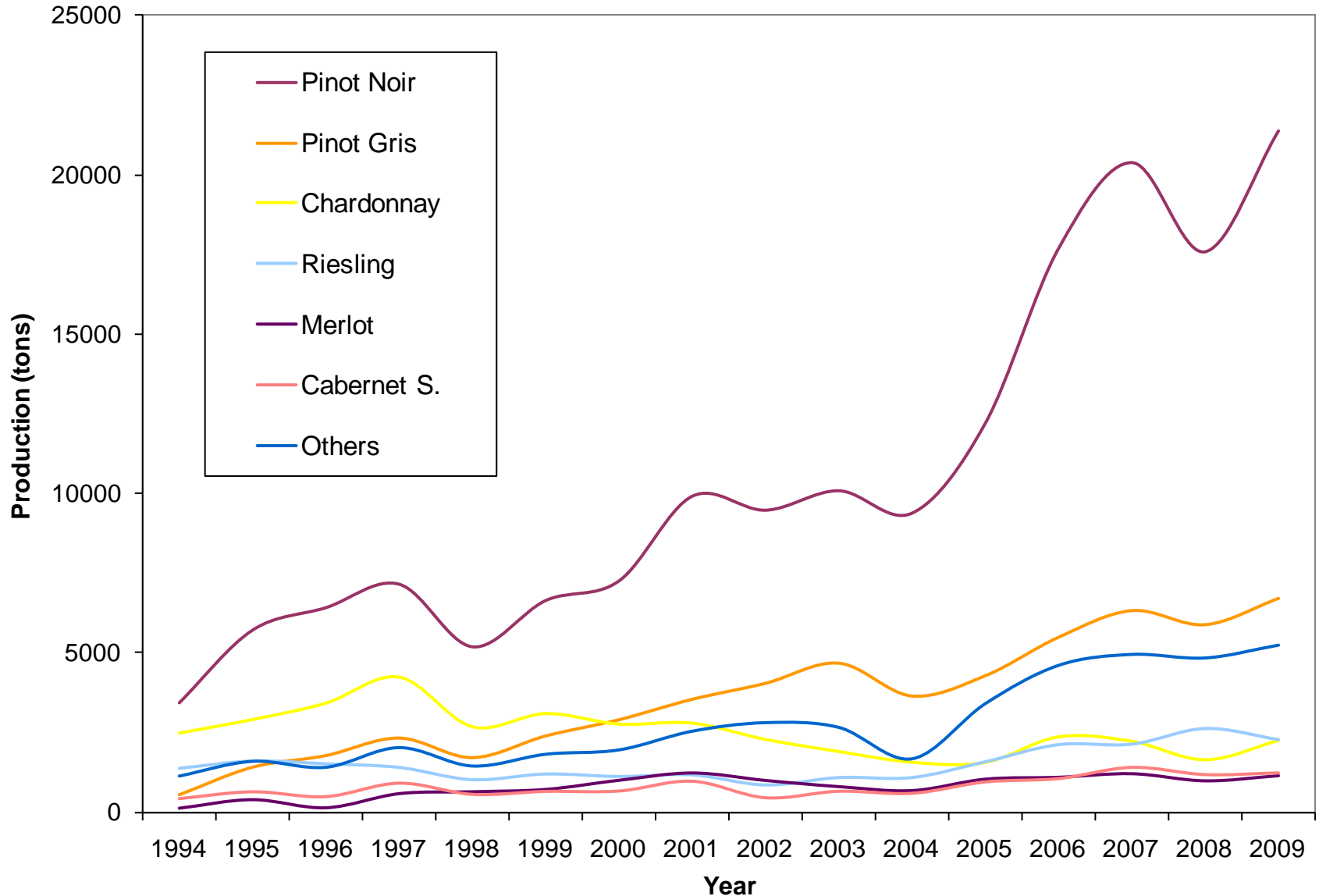


- Not much change from 2008
- Pinot Noir up 2%
- All others same or slightly down

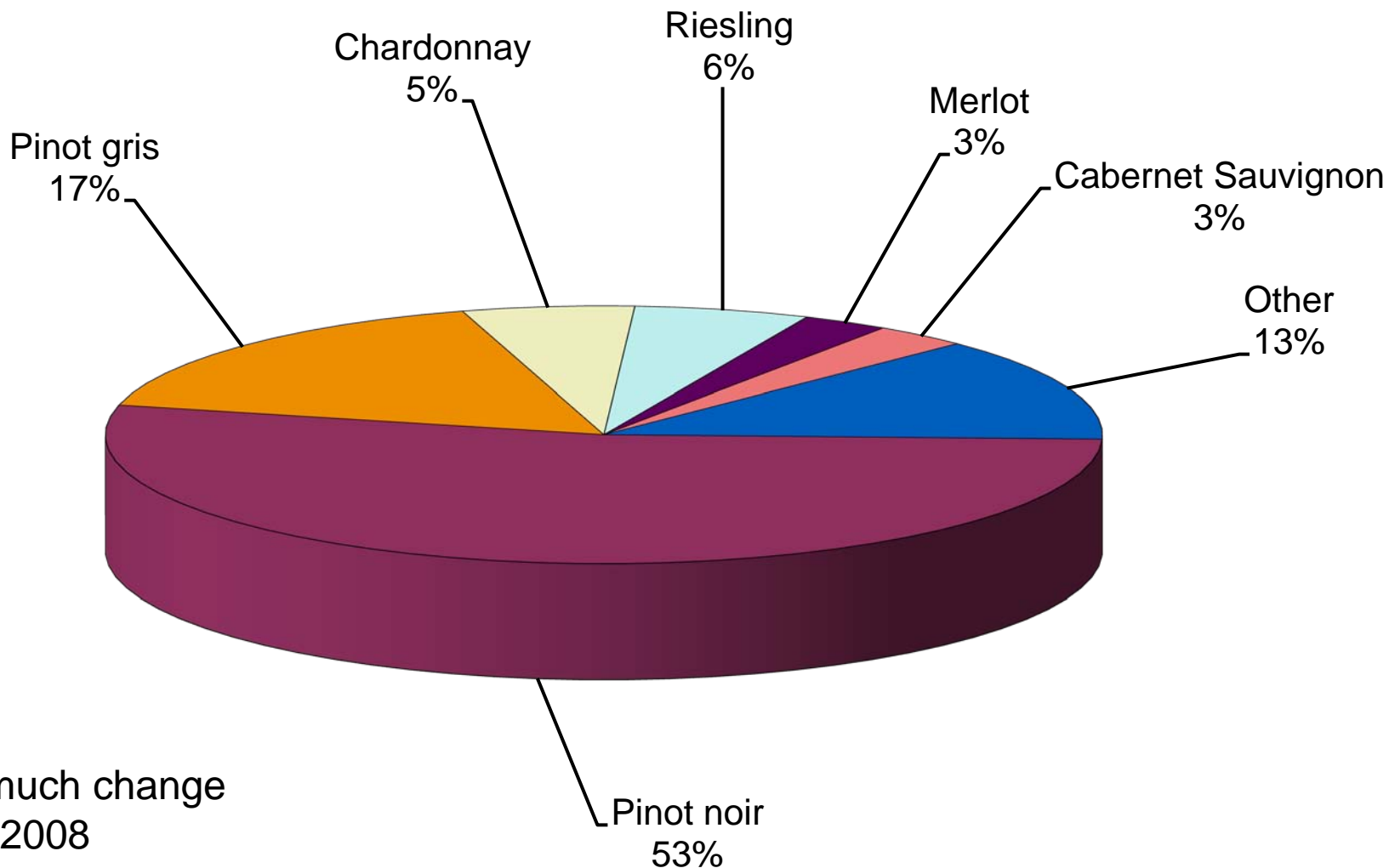
Bearing Acreage as a % of Total Acreage, 1981-2009



Production by Main Varieties, 1994-2009

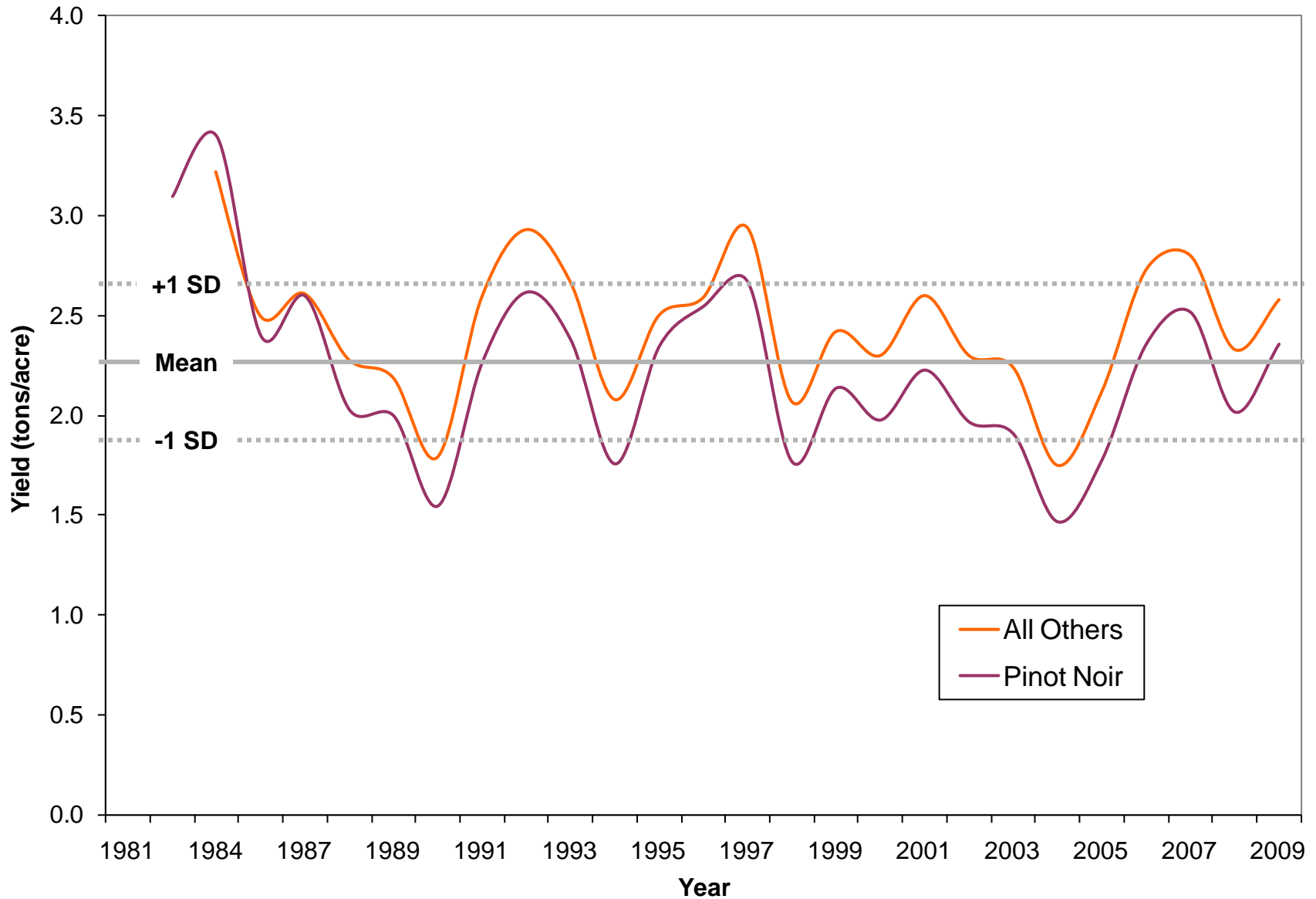


Production by Main Varieties, 2009



- Not much change from 2008
- Pinot up 2%
- All others same or slightly down

Yields, 1981-2009



Reported Crop Losses, 2009

Bird pressure average

Higher than normal
powdery mildew &
botrytis pressure

Some Voles, Elk,
Deer (drought issue)

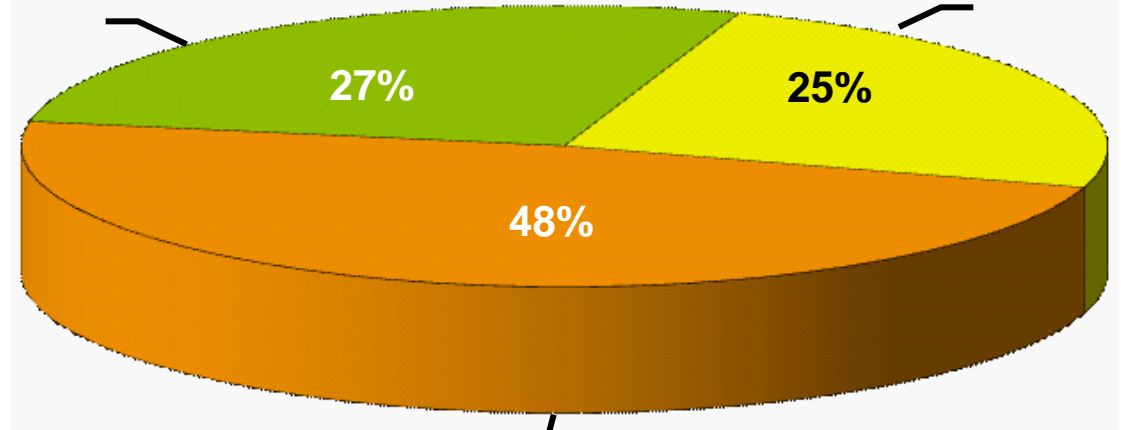
Mites evident

Low necrosis level

Moderate freeze/frost
damage, low rain
impact

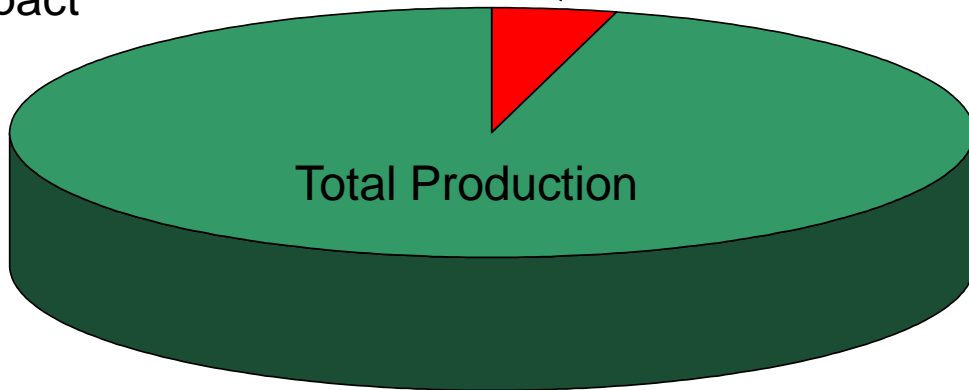
Animal 0.8% of Total

Disease 0.7% of Total



Weather 1.4% of Total

Reported Losses
2.9%



Slightly less than 2008
Rise in Reported Disease Loses
Drop in Reported Weather Loses